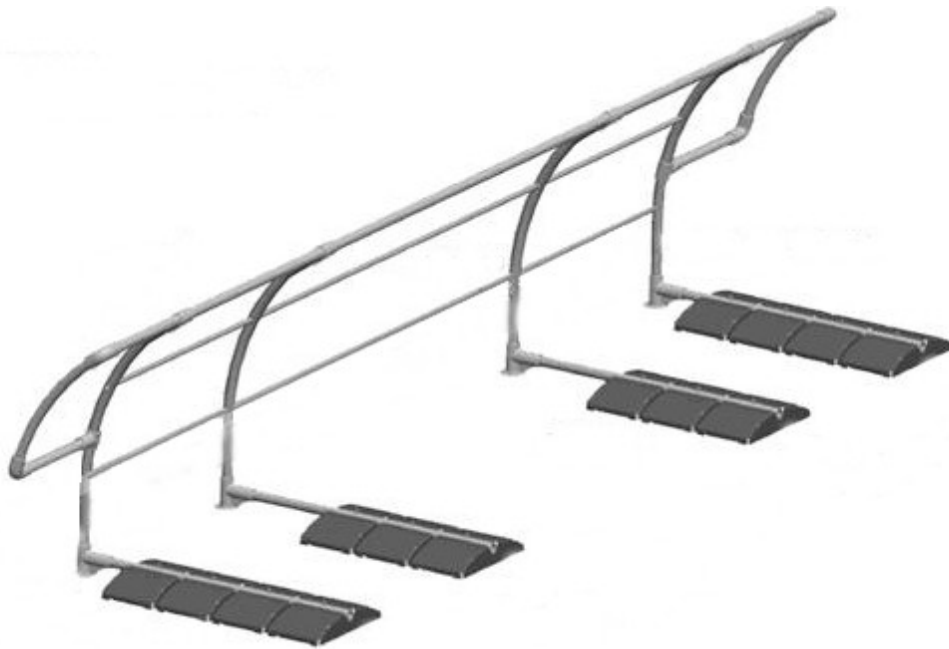
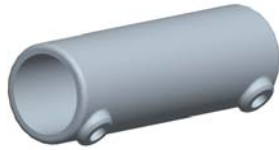


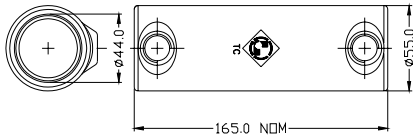
ManSafe® Guardrail System



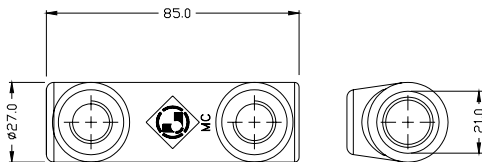
Datasheet No.: 21000_98	DAR No.: 2247	Issue: 1	Issue Date: 26/08/04
Approved: T.Bissett			Sheet 1 of 11



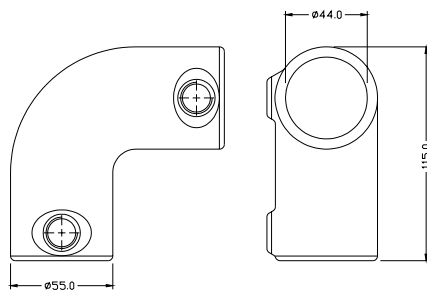
Part No. 21000-00
Description: Top Rail Coupling
Finish: Galvanized to BS EN ISO 1461
Notes: Used to join top guardrail.

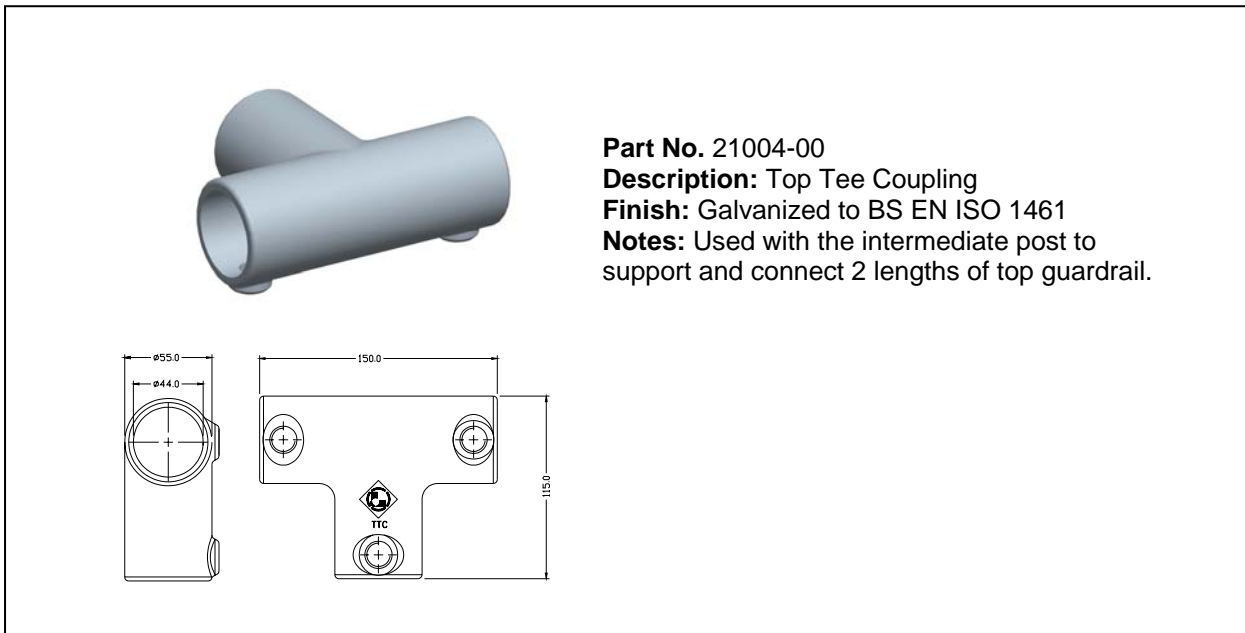
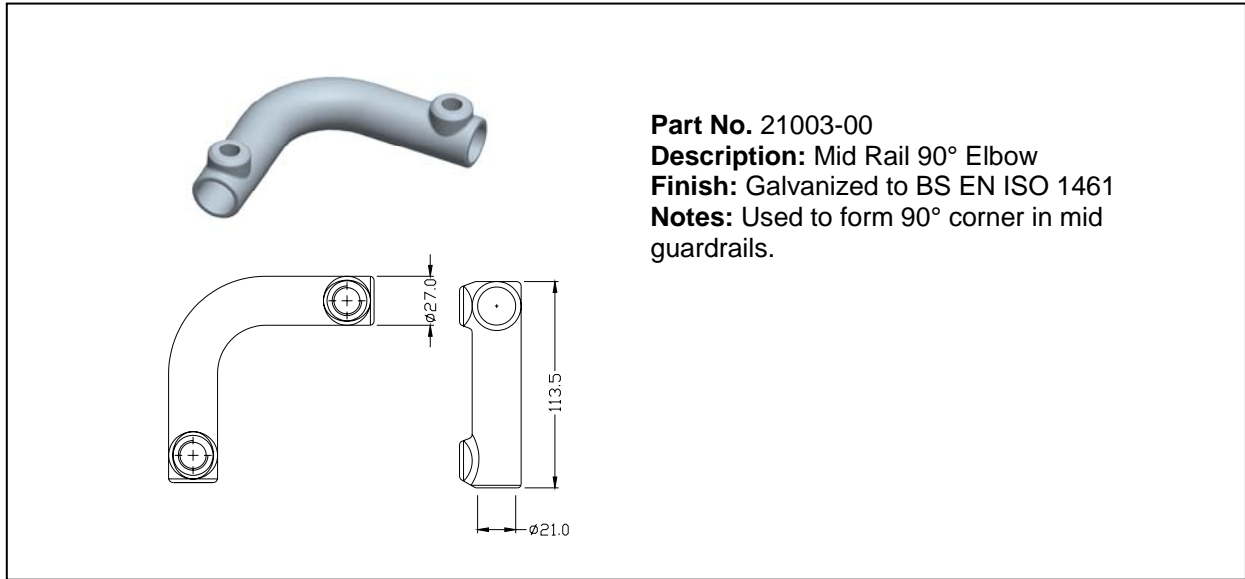


Part No. 21001-00
Description: Mid Rail Coupling
Finish: Galvanized to BS EN ISO 1461
Notes: Used to join mid guardrail.



Part No. 21002-00
Description: Top Rail 90° Elbow
Finish: Galvanized to BS EN ISO 1461
Notes: Used to form 90° corner in top guardrail.





Datasheet No.: 21000_98	DAR No.: 2247	Issue: 1	Issue Date: 26/08/04
Approved: T.Bissett			Sheet 3 of 11

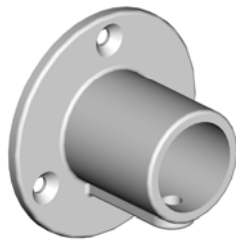
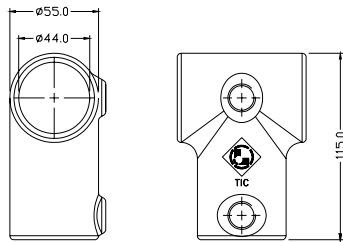


Part No. 21005-00

Description: Standard Top Tee Coupling

Finish: Galvanized to BS EN ISO 1461

Notes: Use with the intermediate post to support the top guardrail.

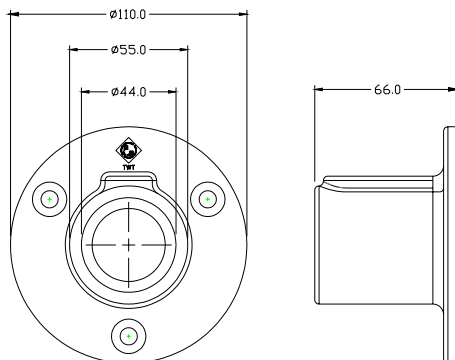


Part No. 21006-00

Description: Top Rail Wall Tie

Finish: Galvanized to BS EN ISO 1461

Notes: Used to connect the top rail to a wall or flat surface when a free standing end post is not required.



Datasheet No.: 21000_98

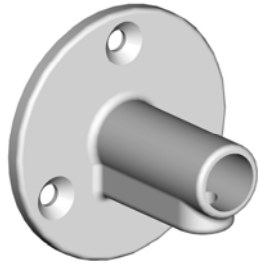
DAR No.: 2247

Issue: 1

Issue Date: 26/08/04

Approved: T.Bissett

Sheet 4 of 11

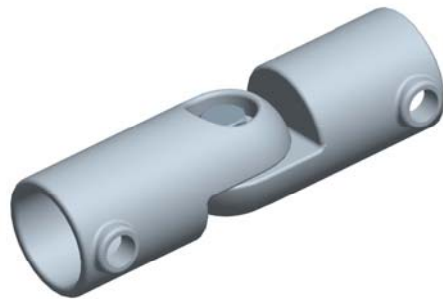
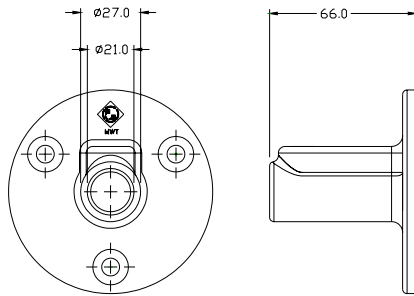


Part No. 21007-00

Description: Mid Rail Wall Tie

Finish: Galvanized to BS EN ISO 1461

Notes: Used to connect the mid rails to a wall or flat surface when a free standing end post is not required.

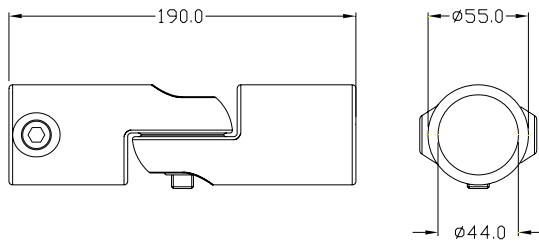


Part No. 21019-00

Description: Top Rail Swivel Coupling

Finish: Galvanized to BS EN ISO 1461

Notes: Used to connect top rails for angles between 90° and 180°.



Datasheet No.: 21000_98

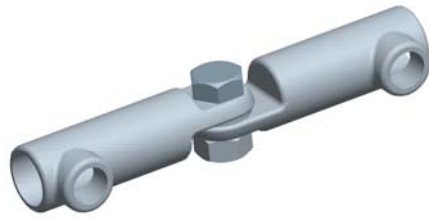
DAR No.: 2247

Issue: 1

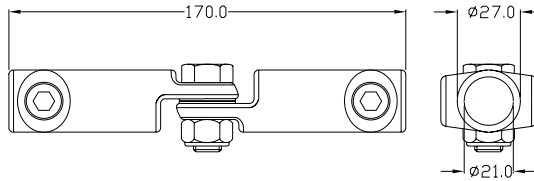
Issue Date: 26/08/04

Approved: T.Bissett

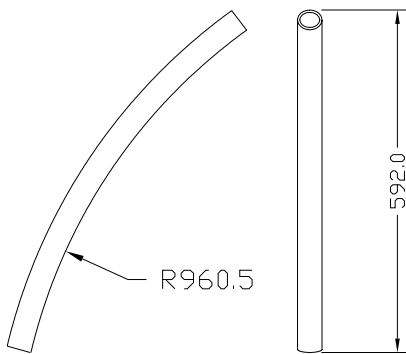
Sheet 5 of 11



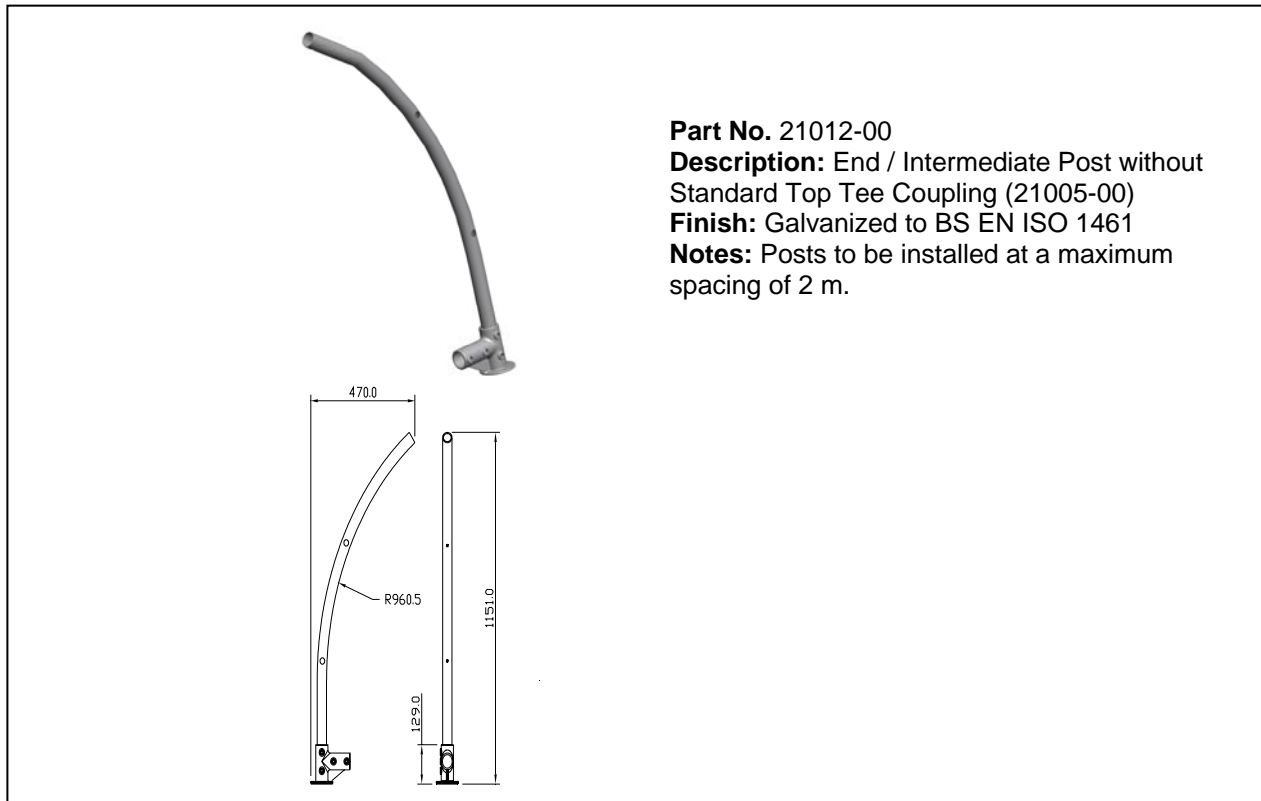
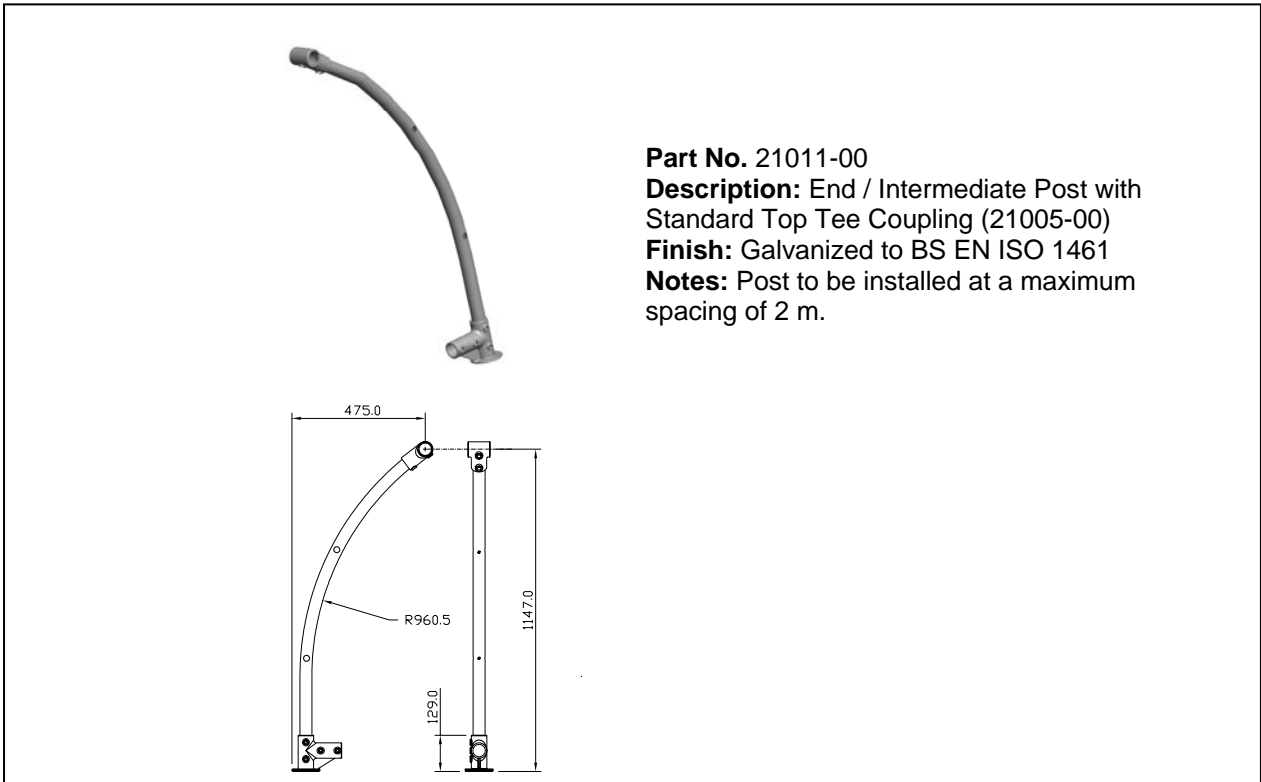
Part No. 21020-00
Description: Mid Rail Swivel Coupling
Finish: Galvanized to BS EN ISO 1461
Notes: Used to connect mid rails for angles between 90° and 180°.



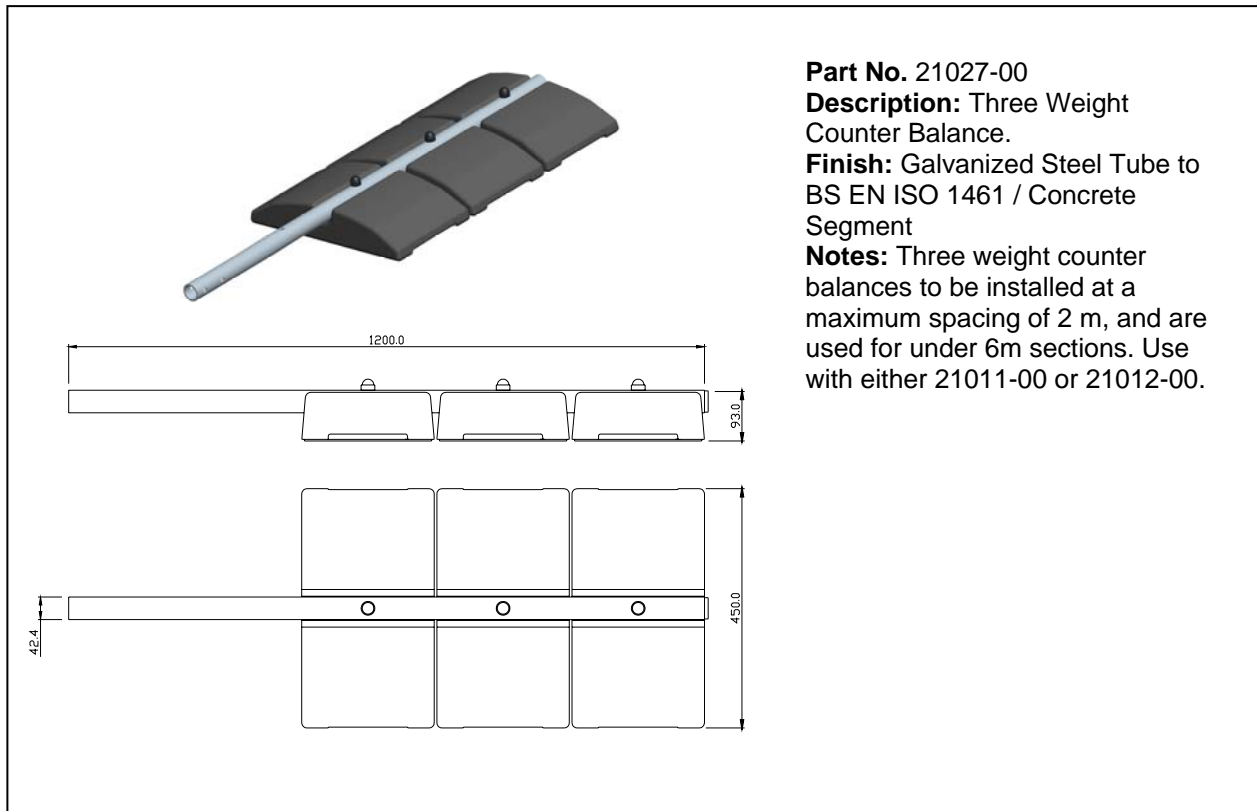
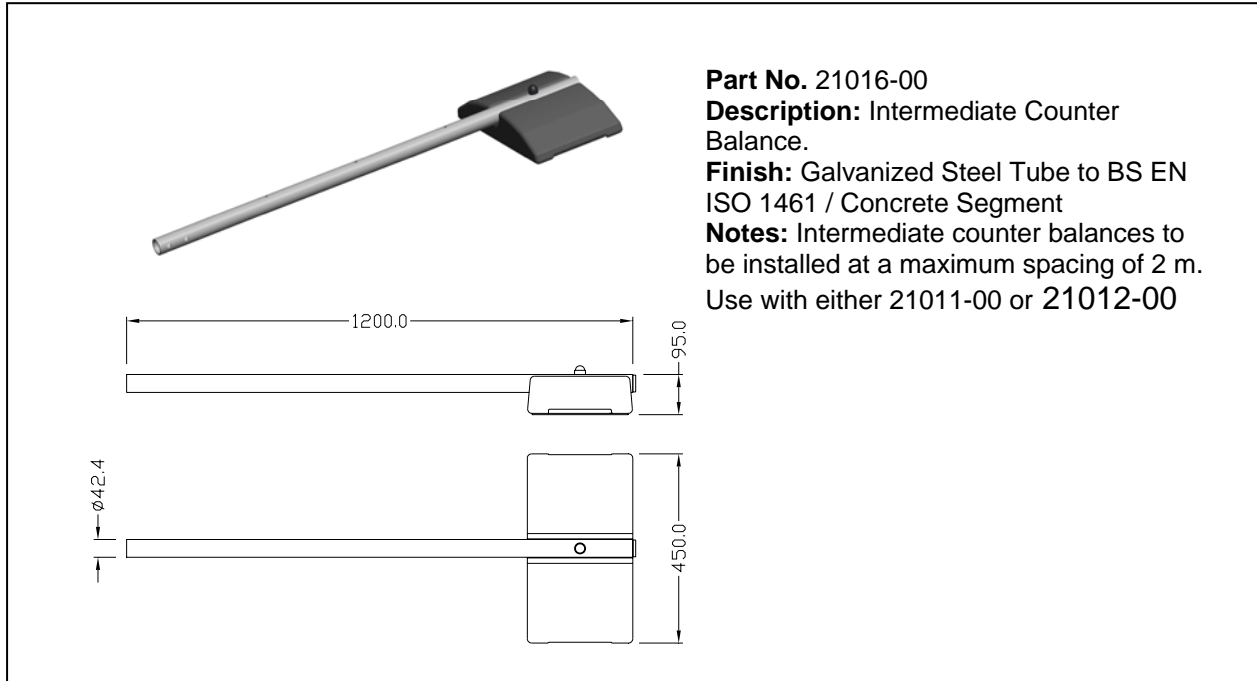
Part No. 21018-00
Description: End Finishing Tube
Finish: Galvanized to BS EN ISO 1461
Notes: Used to form a D-return at the end post position using 2 x 21002-00 and 1 x 21005-00.



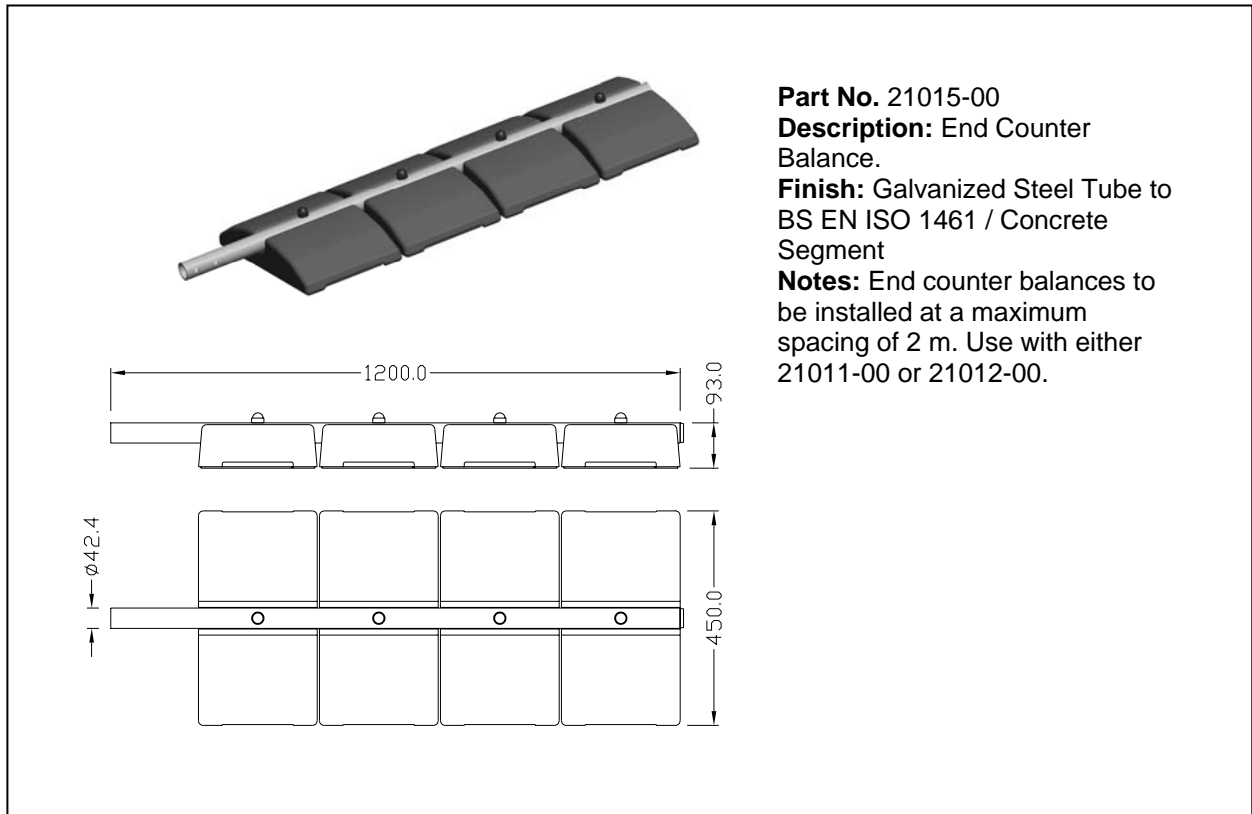
Datasheet No.: 21000_98	DAR No.: 2247	Issue: 1	Issue Date: 26/08/04
Approved: T.Bissett			Sheet 6 of 11



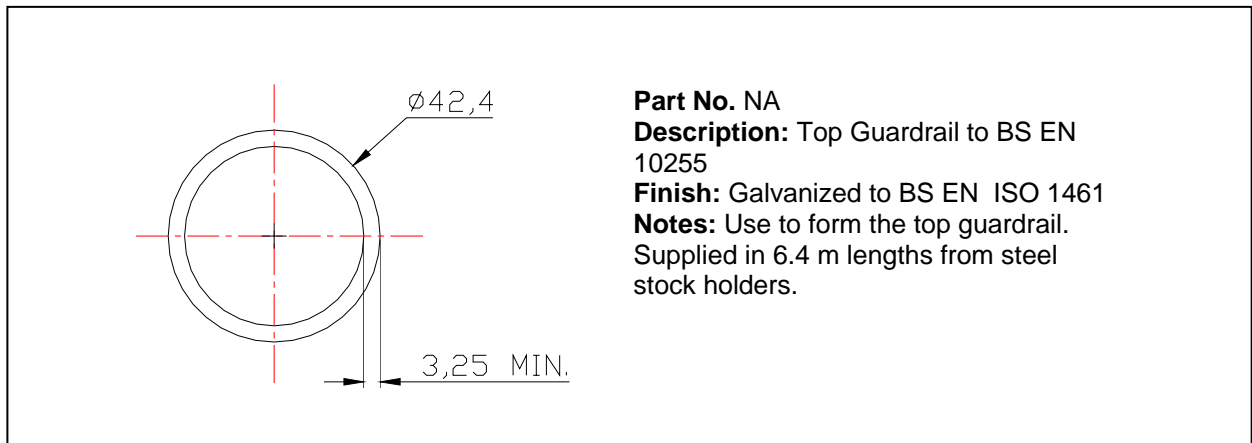
Datasheet No.: 21000_98	DAR No.: 2247	Issue: 1	Issue Date: 26/08/04
Approved: T.Bissett			Sheet 7 of 11



Datasheet No.: 21000_98	DAR No.: 2247	Issue: 1	Issue Date: 26/08/04
Approved: T.Bissett			Sheet 8 of 11

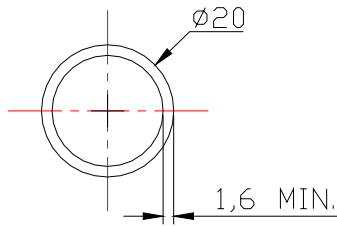


Part No. 21015-00
Description: End Counter Balance.
Finish: Galvanized Steel Tube to BS EN ISO 1461 / Concrete Segment
Notes: End counter balances to be installed at a maximum spacing of 2 m. Use with either 21011-00 or 21012-00.



Part No. NA
Description: Top Guardrail to BS EN 10255
Finish: Galvanized to BS EN ISO 1461
Notes: Use to form the top guardrail. Supplied in 6.4 m lengths from steel stock holders.

Datasheet No.: 21000_98	DAR No.: 2247	Issue: 1	Issue Date: 26/08/04
Approved: T.Bissett			Sheet 9 of 11

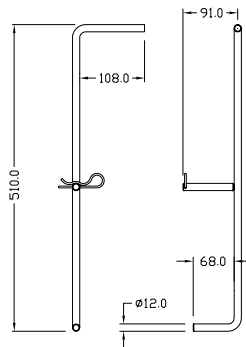


Part No. NA

Description: Mid Guardrail to BS 4568: Part 1

Finish: Galvanized Class 4 to BS 4568

Notes: Use to form the mid guardrails.
Supplied as 3.75 m long steel conduit available from electrical wholesalers.

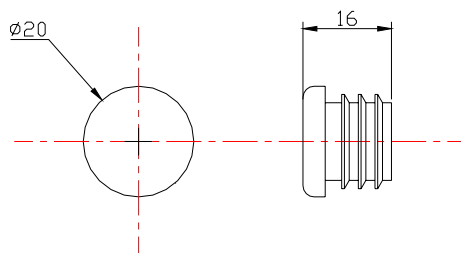


Part No. 21021-00

Description: Counter Weight Carrying Handle

Finish: N/A

Notes: Use to carry counter balance segments. Each segment weighs approximately 16 kg.

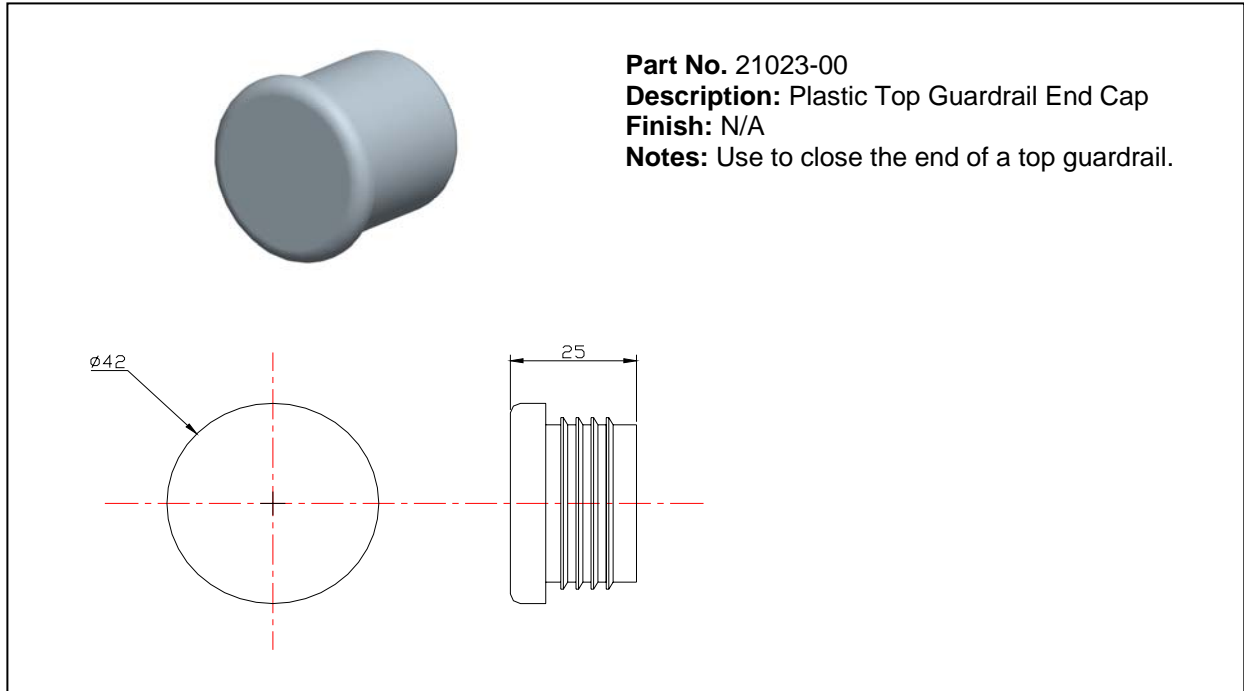


Part No. 21022-00

Description: Plastic Mid Guardrail End Cap

Finish: N/A

Notes: Use to close the end of a mid guardrail.



Part No. 21023-00

Description: Plastic Top Guardrail End Cap

Finish: N/A

Notes: Use to close the end of a top guardrail.

Datasheet No.: 21000_98	DAR No.: 2247	Issue: 1	Issue Date: 26/08/04
Approved: T.Bissett			Sheet 11 of 11